



ELIGIBILITY CENTER

# NCAA INITIAL ELIGIBILITY

## For High Schools



**Amber Viles**

Assistant Director  
of Communications



**Jantzen Raymond**

Assistant Director  
of Outreach and  
Strategic Partnerships



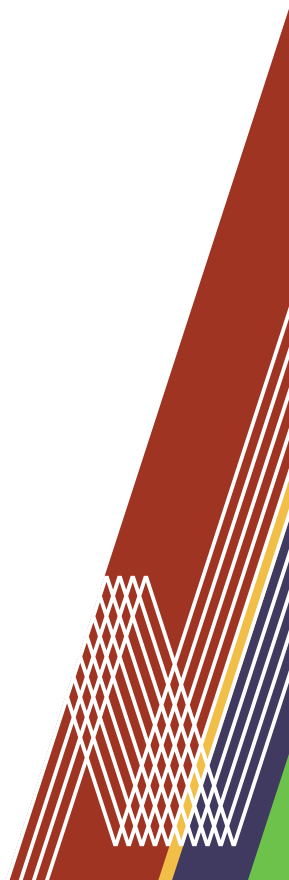
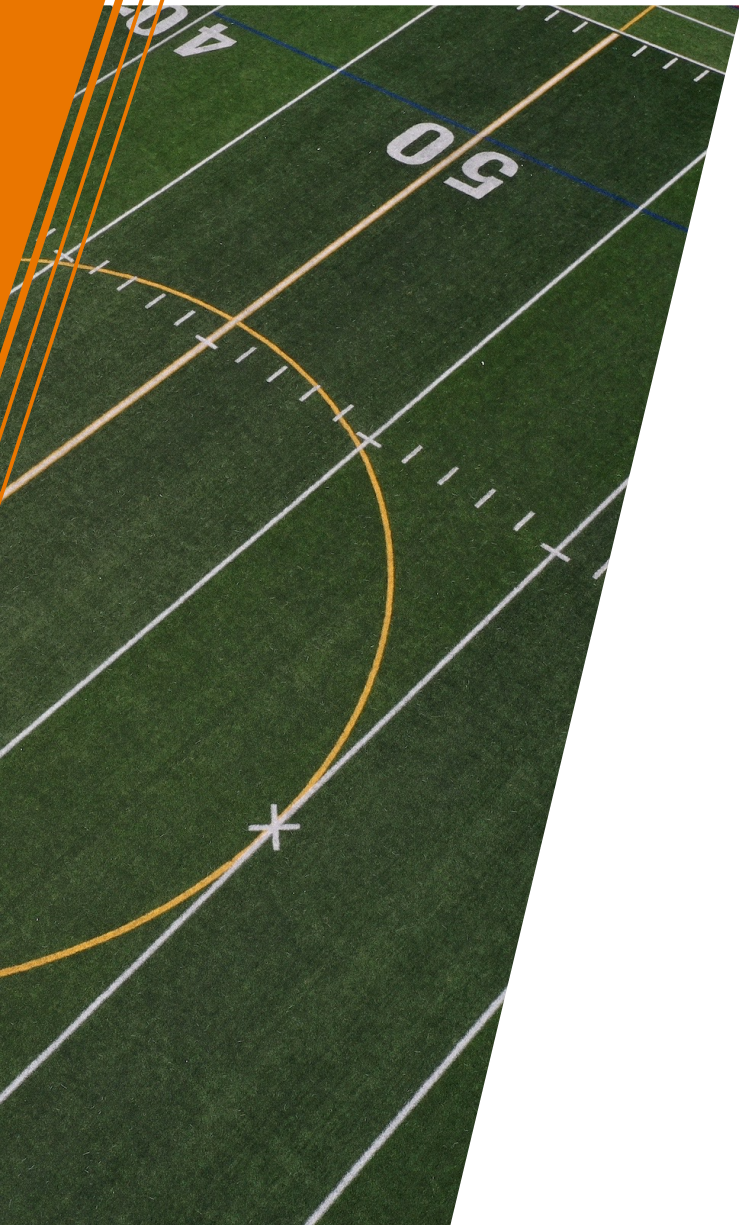
**Ivorye Long**

Assistant Director  
of Outreach and  
Strategic Partnerships



# AGENDA

- » [NCAA Eligibility Center.](#)
- » [NCAA Schools.](#)
- » [Registration is Required.](#)
- » [Core Courses.](#)
- » [Certification Outcomes.](#)
  - [Division I.](#)
  - [Division II.](#)
- » [Recruiting.](#)
- » [High School Portal.](#)
- » [Resources.](#)





ELIGIBILITY CENTER



# NCAA ELIGIBILITY CENTER





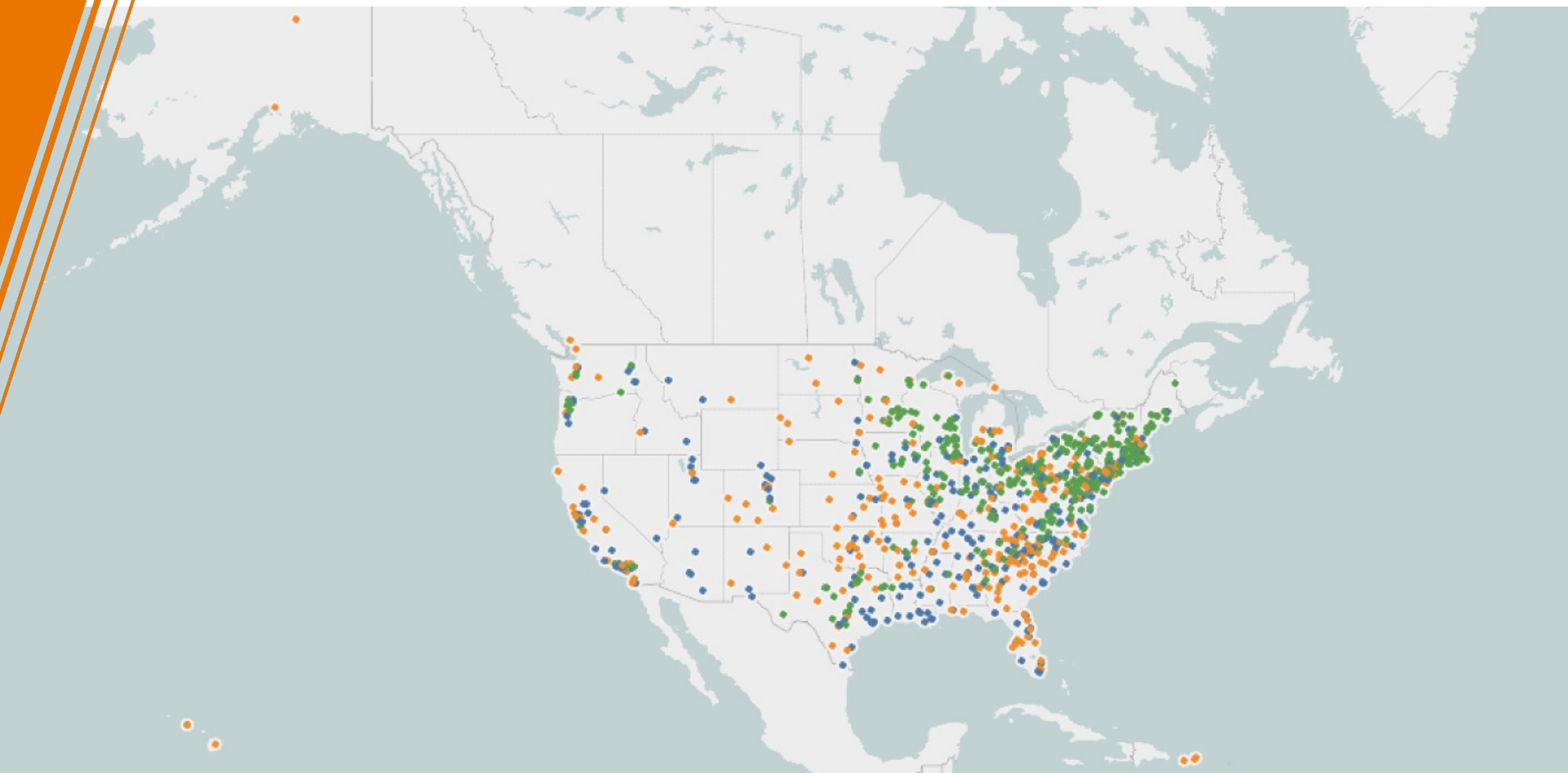
# NCAA ELIGIBILITY CENTER

- » **Who are we?** A unit within the NCAA.
- » **What do we provide?** Certification of college-bound student-athletes for collegiate competition.
- » **What do we review?**
  - Academic requirements.
  - Amateurism requirements.





ELIGIBILITY CENTER



**NCAA SCHOOLS**



ELIGIBILITY CENTER

# NCAA THREE DIVISIONS

DIVISION	DIVISION I	DIVISION II <i>MAKE IT YOURS</i>	DIVISION III <i>DISCOVER   DEVELOP   DEDICATE</i>
NUMBER OF SCHOOLS*	<b>351</b> (33%)	<b>296</b> (27%)	<b>433</b> (40%)
MEDIAN UNDERGRADUATE ENROLLMENT	<b>8,449</b>	<b>2,300</b>	<b>1,655</b>
STUDENTS WHO ARE ATHLETES	<b>1 in 22</b> 	<b>1 in 9</b> 	<b>1 in 6</b> 
AVERAGE NUMBER OF TEAMS PER SCHOOL	<b>19</b>	<b>16</b>	<b>19</b>
PERCENTAGE OF NCAA STUDENT-ATHLETES IN EACH DIVISION	 <b>36%</b>	 <b>25%</b>	 <b>39%</b>
ATHLETICS SCHOLARSHIPS	Multiyear, cost-of-attendance athletics scholarships available <b>58%</b> of athletes receive athletics aid	Partial athletics scholarship model <b>67%</b> of athletes receive athletics aid	No athletics scholarships <b>80%</b> of athletes receive nonathletics aid



# NCAA SPORTS

## FALL SPORTS

**MEN:**

Cross  
Country  
Football  
Soccer  
Water Polo

**WOMEN:**

Cross  
Country  
Field Hockey  
Soccer  
Volleyball

## WINTER SPORTS

**MEN:**

Basketball  
Fencing  
Gymnastics  
Ice Hockey  
Indoor Track  
and Field  
Rifle  
Skiing  
Swimming  
and Diving  
Wrestling

**WOMEN:**

Basketball  
Bowling  
Fencing  
Gymnastics  
Ice Hockey  
Indoor Track  
and Field  
Rifle  
Skiing  
Swimming  
and Diving

## SPRING SPORTS

**MEN:**

Baseball  
Golf  
Lacrosse  
Outdoor Track  
and Field  
Tennis  
Volleyball

**WOMEN:**

Beach  
Volleyball  
Golf  
Lacrosse  
Outdoor  
Track  
and Field  
Rowing  
Softball  
Tennis  
Water Polo

## EMERGING SPORTS

**WOMEN:**

Acrobatics  
and Tumbling  
Equestrian  
(Divisions I and II only)  
Rugby  
Stunt (Division II only)  
Triathlon  
Wrestling



# CHOOSING AN NCAA SCHOOL



School Size



School Location



Majors  
and Minors



Cost of  
Attendance



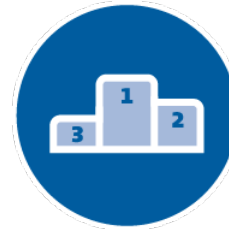
Admission  
Requirements



Culture  
and Affiliations



Student-to-  
Faculty Ratio



Playing Time

» Encourage your students to this [interactive map](#) to locate NCAA schools they're interested in attending.



# THREE REQUIREMENTS TO PLAY COLLEGE SPORTS



**High School  
Graduation**



**NCAA  
Initial Eligibility**



**College  
Admission**



## COLLEGE ADMISSION

- » Apply and be accepted to the NCAA school before they can compete.
  - NCAA certification does **NOT** include acceptance to the NCAA school recruiting them.
- » Ask college admission about:
  - Cost of attendance.
  - Financial aid.
  - Standardized test scores.
    - > May be required for college admission or scholarships.
    - > NOT required for NCAA certification.
  - For more questions to ask, visit [on.ncaa.com/ChoosingCollege](https://on.ncaa.com/ChoosingCollege).



# SCHOLARSHIPS BY SPORT

Only about **2% of high school-athletes** are awarded athletics scholarships to compete in college.

- » Academic scholarships.
- » Athletics scholarships.
- » Expectations.
  - Annual scholarships.
  - Full scholarships.
  - Partial scholarships.
  - Scholarship renewals.





# KEEP CERTIFICATIONS ON TRACK



**1** **Register**  
Free Profile Page

**2** **Plan to Take Core Courses**

**Complete**  
4 NCAA-Approved Core Courses

**3** **Transition**  
Certification Account

**Complete**  
8 NCAA-Approved Core Courses

**4** **Get Recruited**  
Research Schools You're Interested In

**5** **Ask Your High School**  
To Upload Transcripts

**Complete**  
12 NCAA-Approved Core Courses

**6** **Check-In**  
10/7 Requirement

**7** **Ask Your High School**  
To Upload Transcripts

**8** **Apply to NCAA Schools**  
Get Accepted

**9** **Sign National Letter of Intent**  
(Optional)

**10** **Request Final Amateurism**

**11** **Graduate High School**

**Complete**  
16 NCAA-Approved Core Courses with 2.3 GPA

**12** **Ask Your High School**  
To Upload Transcripts

**13** **Ask Your High School**  
To Upload Proof of Grad

**14** **Be Certified By the NCAA EC**





[Forgot your password?](#)

[Login](#)

[Help](#)

[High School Administrators](#)

## WANT TO PLAY COLLEGE SPORTS?

Creating an account is the first step toward becoming an NCAA student-athlete



[REGISTER](#)

NOT SURE WHICH DIVISION YOUR SCHOOL IS IN?

[Learn more](#) or [search NCAA schools](#).

# NCAA REGISTRATION IS REQUIRED

## Register Before Freshman Year

# NCAA REGISTRATION IS REQUIRED

## Three Account Types



**Free Profile Page  
Account**



**Academic  
and Amateurism  
Certification Account**



**Amateurism-Only  
Certification Account**



# FREE PROFILE PAGE ACCOUNT

## Account Type #1



The right place to start for most students!

- » Not sure in which division they plan to compete.
- » Domestic students planning to compete at a [Division III school](#).
- » Registering in an NCAA-certified nonscholastic basketball event ([BBCS](#), ECAG, AAU).



No registration fee.



[Transition](#) to the right [certification account](#) at any time.

# ACADEMIC AND AMATEURISM CERTIFICATION ACCOUNT

## Account Type #2



Required to compete at a Division I or II school.

- » Go on [official visits](#).
- » Sign a [National Letter of Intent](#).
- » Receive an athletics scholarship.



Registration fee:

- » [Domestic students](#): \$100.
- » [International students](#): \$160.





# AMATEURISM-ONLY CERTIFICATION ACCOUNT

## Account Type #3



Required for all [international student-athletes](#) planning to compete at a Division III school.



Registration fee:  
» \$70.



Student-athletes transferring from a two-year school to an NCAA Division I or II school who did not require an Eligibility Center academic certification.



## REMEMBER

- » If your student has an Eligibility Center certification account, remind them to check if they meet [fee waiver criteria](#).



# HOW TO SUBMIT A FEE WAIVER

- » You must confirm if your student meets any of the fee waiver criteria through the [High School Portal](#).
- » To learn how to submit a fee waiver, [view this tutorial](#).
  - **Note:** If a student meets any fee waiver criteria and has not attended a U.S. high school (e.g., international or, home school students), a task will be assigned to their Eligibility Center account with fee waiver requirement instructions.





ELIGIBILITY CENTER

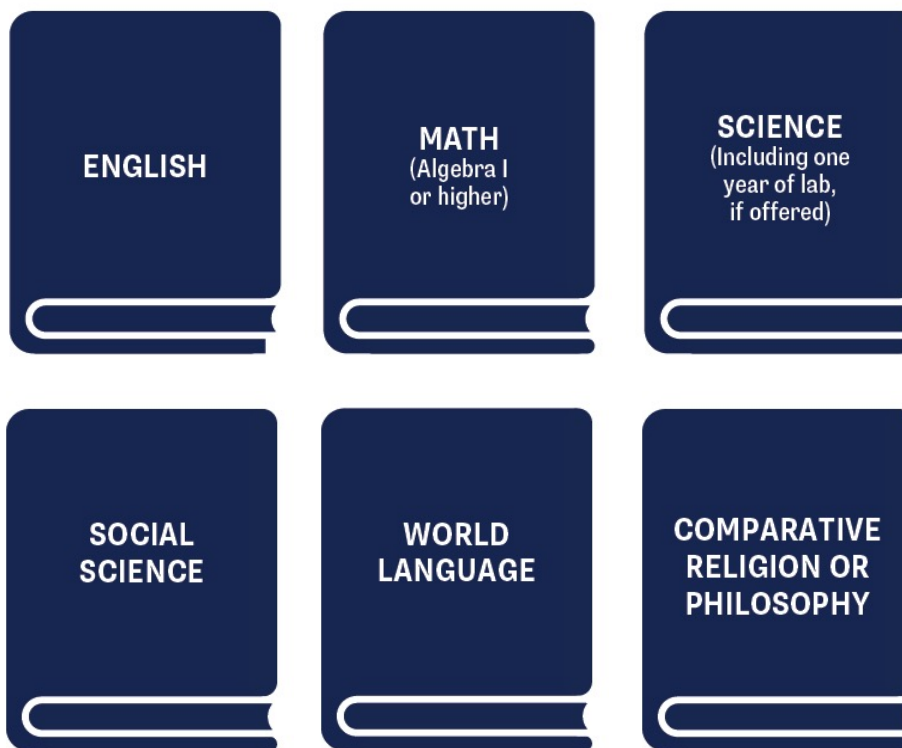


**CORE COURSES**



# WHAT IS A CORE COURSE?

» Meets all requirements for an [NCAA-approved core course](#).

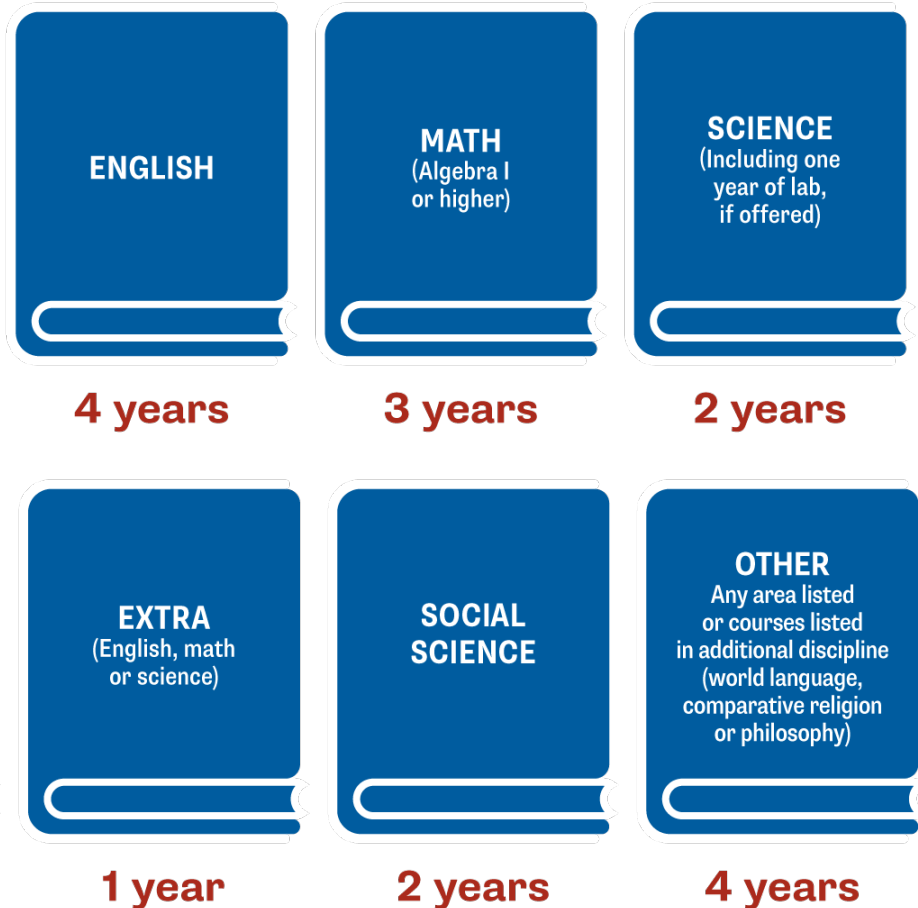


» Find your [high school's list](#) of NCAA-approved core courses.



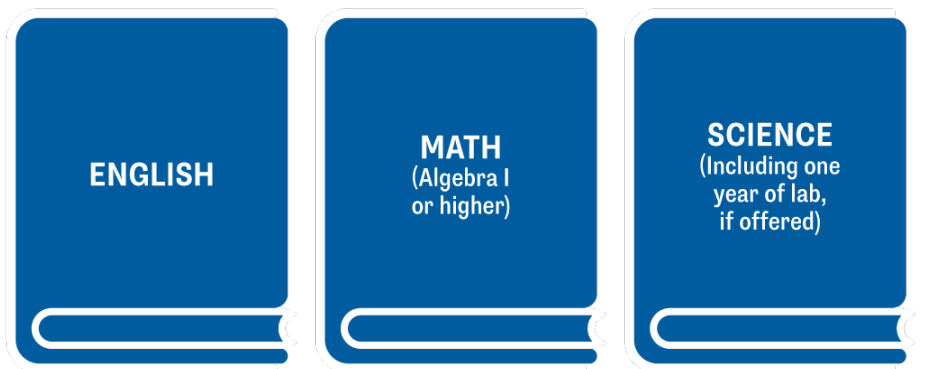
# DIVISION I: 16 CORE-COURSE UNITS

Complete 16 core-course units in eight academic semesters.



# DIVISION I: CORE-COURSE TIME LIMITATION

Complete 10 of their 16 NCAA-approved core-course credits, including seven in English, math or science, before the start of the seventh semester.



» Once a student begins their seventh semester, any course that is needed to meet the 10/7 requirement cannot be replaced or repeated.



# EXAMPLE SCHEDULE

How to plan your high school courses to meet the 16 core-course requirement:

$$4 \times 4 = 16$$

## 9<sup>th</sup> GRADE

- (1) English
- (1) Math
- (1) Science
- (1) Social Science and/or other

**4 CORE COURSES**

## 10<sup>th</sup> GRADE

- (1) English
- (1) Math
- (1) Science
- (1) Social Science and/or other

**4 CORE COURSES**

## 11<sup>th</sup> GRADE

- (1) English
- (1) Math
- (1) Science
- (1) Social Science and/or other

**4 CORE COURSES**

## 12<sup>th</sup> GRADE

- (1) English
- (1) Math
- (1) Science
- (1) Social Science and/or other

**4 CORE COURSES**





# HOW TO MANAGE CORE-COURSE LISTS

- » To learn how to manage your school's core-course list, [view this tutorial](#).
- » Core-course titles submitted will be reviewed to determine if meets all NCAA core-course legislation.
  - Course contents.
  - Rigor of performance tasks/assessments.
- » **Note:** The [High School Review Committee Policies and Procedures](#) outlines the criteria used for review of core courses.



# NCAA COURSES

» In the [My High School's NCAA Courses tab](#), you can:

- View your school's account status, summary, grading scale and core-course information.
- Find your school's list of NCAA-approved core courses, courses on hold because additional information is required, archived titles and courses designated as "not approved."

High School Summary	
NCAA High School Code	
CEEB Code	
High School Name	UNIVERSAL SCHOOL
Address	1802 ALONZO WATFORD SR. DRIVE INDIANAPOLIS IN - 46202
Primary Contact Name	NCAA ELIGIBILITY CENTER
Primary Contact Phone	
Primary Contact Fax	
Primary Contact Email	ecupdate@ncaa.org
Secondary Contact Name	NCAA ELIGIBILITY CENTER
Secondary Contact Phone	
Secondary Contact Fax	
Secondary Contact Email	ec-clientrelations@ncaa.org
School Website	<a href="http://www.eligibilitycenter.org">http://www.eligibilitycenter.org</a>
Link to Online Course Catalog/Program of Studies	
Last Update of List of NCAA Courses	
Other Teams Formally Affiliated	



## NCAA COURSES

» In [Status of Updates tab](#), you can:

- Check the status of your core-course submissions over the last 60 days.

**Note:** Submissions will be marked as “Complete” or “Incomplete.” For courses that have been reviewed, you may find the decisions by clicking the My High School’s List of NCAA Courses tab.

# NCAA COURSES

- » In the [Submit Updates to My School's List tab](#), you can:
  - Add new course offerings.
  - Archive courses no longer taught (these can still be used in student certifications).
  - Change the names of course title(s).
  - Add science lab to existing titles.
- » In the [Submit Pending Course Documents tab](#), you can:
  - Upload core-course documents for review for titles listed in “Additional Information Required.”
  - Submit core-course documents for review if you believe one of the following “Not Approved” reason codes were misapplied (RC 5, 11, 12, 17).



## REMEMBER

- » [The COVID-19 distance, e-learning or hybrid programs policy](#) applies to students from all grade levels (e.g., freshmen, sophomores) who complete distance, e-learning or hybrid courses in 2022-23 at schools with NCAA-approved core courses.
- » **It does NOT apply to courses completed on or after September 1, 2023.**
- » Contact the Eligibility Center to have nontraditional programs reviewed, if you haven't already.



ELIGIBILITY CENTER

A close-up photograph showing a person wearing a green athletic shirt. Another person is adjusting a bright pink and black running shoe on their foot. The shoe has pink laces and black accents. The background is slightly blurred, showing another person's face.

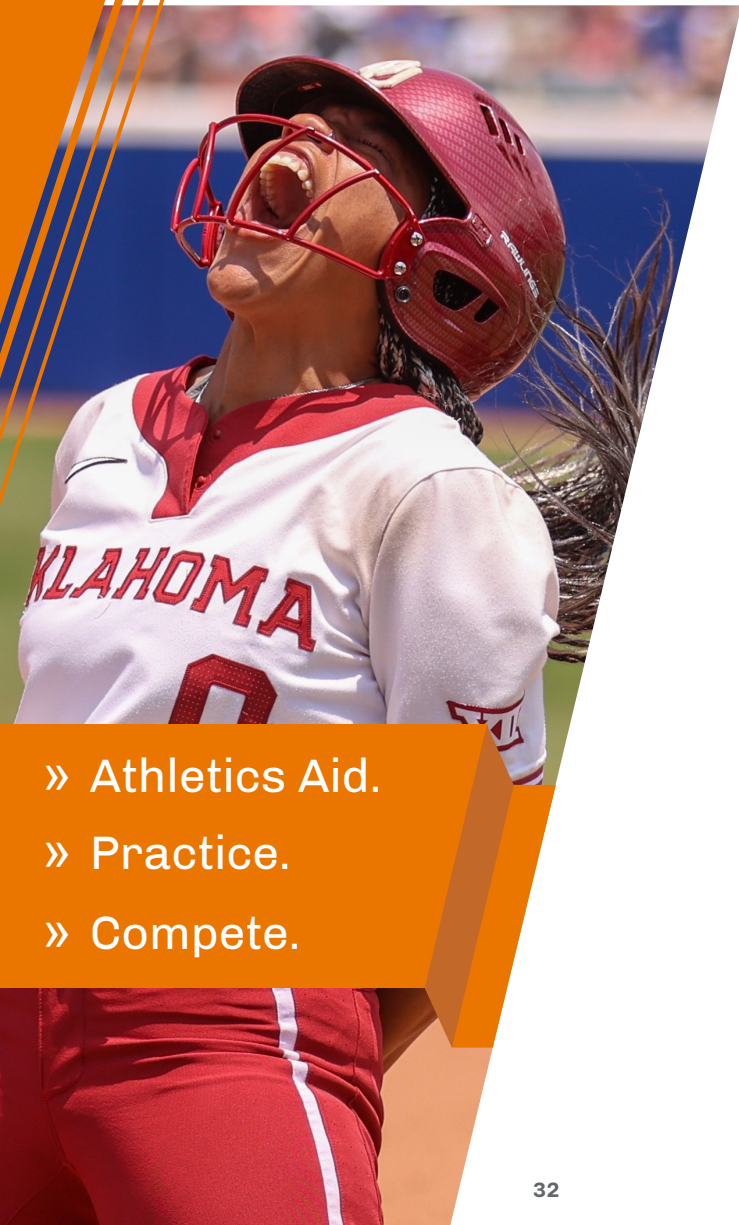
**CERTIFICATION  
OUTCOMES**  
Divisions I and II



## Division I CERTIFICATION OUTCOMES

1. [Early Academic Qualifier.](#)
2. [Qualifier.](#)
3. [Academic Redshirt.](#)
4. [Nonqualifier.](#)





# DIVISION I: QUALIFIER



Complete 16 core-course units in the required subject areas.



Meet core-course progression before the seventh semester.

**Note:** Students certified based solely on international credentials are exempt from core-course progression.



Earn a core-course GPA  $\geq 2.3$  in the required subject areas.



Submit proof of graduation to the Eligibility Center.

- » Athletics Aid.
- » Practice.
- » Compete.





# DIVISION I: ACADEMIC REDSHIRT



Complete 16 core-course units in the required subject areas.



Earn a core-course GPA  $\geq 2.0$  in the required subject areas.



Submit proof of graduation to the Eligibility Center.

- » First Year Athletics Aid.
- » First Term Practice.



# DIVISION I: NONQUALIFIER



Nonqualifiers are not eligible to receive athletics aid, practice or compete their first year at an NCAA Division I school.

- » ~~Athletics Aid.~~
- » ~~Practice.~~
- » ~~Compete.~~



## Division II CERTIFICATION OUTCOMES

1. Early Academic Qualifier.
2. Qualifier.
3. Partial Qualifier.



## DIVISION II: QUALIFIER



Complete 16 core-course units in the required subject areas.



Earn a core-course GPA  $\geq 2.2$  in the required subject areas.



Submit proof of graduation to the Eligibility Center.

- » Athletics Aid.
- » Practice.
- » Compete.



## **DIVISION II: PARTIAL QUALIFIER**

College-bound student-athletes that do not meet Division II qualifier standards will be deemed a partial qualifier.



Submit proof of graduation to the Eligibility Center.

- » Athletics Aid.
- » Practice.



## DIVISION III

- » Each Division III school determines its own eligibility for:
  - Academic requirements.
  - Admission.
  - Financial aid.
- » **International student-athletes** who plan to compete at a Division III school must complete an NCAA Eligibility Center Amateurism-Only Certification account.
- » Domestic student-athletes who plan to compete at a Division III school may register for a free Profile Page account, but it is not required.



ELIGIBILITY CENTER



**RECRUITING**



# IS YOUR STUDENT BEING RECRUITED?

» A student is being recruited if a college coach:



**Calls**



**Texts**



**Emails**



**Messages via  
Social Media**



**Visits Your  
High School**



**Pays Expenses  
to Visit Campus**



**Issues National  
Letter of Intent**



**Writes Offer  
of Financial Aid**

» Recruiting can begin as early as freshman year.

- In most cases, recruiting starts before junior year.





# INSTITUTIONAL REQUEST LIST

- » An IRL is a list of college-bound student-athletes an NCAA school is interested in recruiting.
  - A student **must** be on an NCAA school's IRL to receive an Eligibility Center certification.
    - > Receive athletics aid.
    - > Practice.
    - > Compete.



# RECRUITING CALENDARS

NCAA Division I and II recruiting calendars promote student well-being and ensure fairness among schools by defining certain periods during the year in which recruiting may or may not occur in a particular sport.

<i>Division, Sport and Grade Level Determines Recruiting Activities*</i>			
<b>Contact Period</b>	<b>Evaluation Period</b>	<b>Quiet Period</b>	<b>Dead Period</b>
College coaches may call, write, text or email you and your family.	College coaches may call, write, text or email you and your family.	College coaches may call, write, text or email you and your family.	College coaches may call, write, text or email you and your family.
College coaches may watch you compete.	College coaches may watch you compete.	College coaches may not watch you compete.	College coaches may not watch you compete.
College coaches may visit your high school.	College coaches may visit your high school.	College coaches may not visit your high school.	College coaches may not visit your high school.
College coaches may have face-to-face contact with you and your family.	College coaches may not have face-to-face contact with you or your family off the college's campus.	College coaches may only have face-to-face contact with you and your family on the college's campus.	College coaches may not have face-to-face contact with you or your family.

To view a division- and sport-specific recruiting calendar visit [on.ncaa.com/RecruitCal](https://on.ncaa.com/RecruitCal).



# OFFICIAL VS UNOFFICIAL VISITS

## OFFICIAL VISITS

Official visits are any visit to a college campus paid for by the NCAA school the student is visiting. Before a Division I or II official visit, the student must:



Register for a  
Certification Account



Be on an IRL



Send High  
School Transcripts

## UNOFFICIAL VISITS

Unofficial visits are any visit to a college campus paid by the student or their family members.



# OFFICIAL VS UNOFFICIAL VISITS

## What can an NCAA school pay for during an official visit?

<b>Division I</b>	<b>Division II</b>	<b>Division III</b>
Transportation to and from the NCAA school you're visiting for you (and up to two family members).	Your transportation to and from the NCAA school you're visiting.	Your transportation to and from the NCAA school you're visiting.
Your lodging.	Your lodging.	Your lodging.
Up to three meals per day for you and up to four family members.	Your meals.	Up to three on-campus meals per day for you.
Reasonable entertainment expenses (including up to \$60 per recruited student-athlete and up to four family members accompanying you, including five tickets to a home sports event).	Reasonable entertainment expenses (including up to \$30 per recruited student-athlete and any family member accompanying you, including five tickets to a home sports event).	Reasonable entertainment expenses (including up to \$40 per recruited student-athlete and any family member accompanying you, including tickets to home sports events).

## What can an NCAA school pay for during an unofficial visit?

<b>Division I</b>	<b>Division II</b>	<b>Division III</b>
Complimentary admission (including three tickets for a home athletics contest).	Complimentary admission (including five tickets for a home athletics contest).	Complimentary admission (including tickets for you and those accompanying you).

# QUESTIONS TO ASK NCAA COACHES

- » Additional team responsibilities.
- » Athletic training and medical expenses.
- » Coaching philosophy and style.
- » Degree completion support.
- » Injuries and rehabilitation.
- » Mental health resources.
- » Playing time.
  - Am I a top seed, five seed or standby recruit?
  - Are there any redshirt expectations?
- » Scholarship renewals.
  - Will I receive a full or partial scholarship?
  - If I'm injured will my scholarship remain?
- » Team time demands.



## RECRUITING BEST PRACTICES

- » Encourage your student to talk with their support system about what level of competition they think the student should aim for.
- » Remind them to check their email often for open Eligibility Center tasks.
- » Encourage them to use this [interactive map](#) to locate NCAA schools they're interested in attending.
  - Help them research admission requirements to NCAA schools they're interested in attending.
- » Remind them to research their division- and sport-specific recruiting periods.



## RECRUITING BEST PRACTICES

- » Encourage them to email college coaches during their sport's contact period to share achievements and interest.
  - Include their name, position and [NCAA ID](#).



Student Name

**NCAA ID: 1234567890**

Grad: MM/YYYY | Enroll: SEASON YYYY

- » Remind them to take official and unofficial visits to NCAA schools.
  - Help them review school websites and take virtual campus tours to learn more about NCAA schools.
- » Encourage them to conduct themselves in a positive manner in class, practices and games, at home, in their community and online.

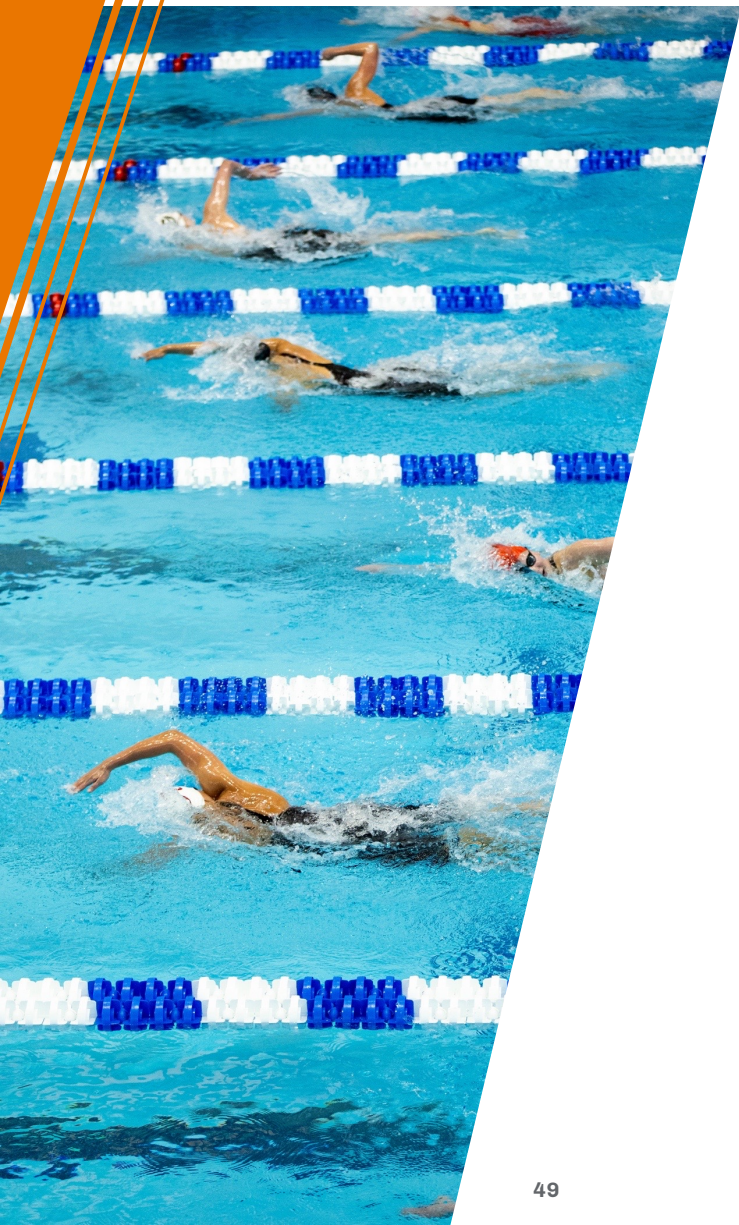


# NAME, IMAGE AND LIKENESS

- » NCAA student-athletes can benefit from their NIL.
- » For more resources:
  - Visit [ncaa.org/nil](https://ncaa.org/nil).
  - Encourage students to contact their state's High School Athletic Association for current legislation.
  - Encourage students to contact their future NCAA school's compliance office.
  - Follow the Eligibility Center on [Twitter](#), [Instagram](#), [YouTube](#) and [Facebook](#).







# NATIONAL LETTER OF INTENT

- » By signing a NLI, the student agrees to attend a Division I or II school for one academic year.
- » NLI is voluntary and ends the recruiting process.
- » Athletics financial aid is provided for a minimum of one academic year.
  - Student must be admitted to the NCAA school.
  - Student must be eligible for financial aid under NCAA rules.
- » For more NLI information, visit [nationalletter.org](http://nationalletter.org).



## Welcome to the NCAA Eligibility Center High School Portal

 [Email Feed](#)

### Announcements

25-May-23

New Initial-Eligibility FAQ; COVID-19 Sunsetting Guidelines

The Eligibility Center has released a [new FAQ](#) outlining the sunsetting of COVID-19 relief policies initiated during the pandemic. This resource outlines which student-athletes are impacted and when those policies will be sunset. Please refer to [this document](#) for information regarding sunsetting the COVID relief policy.

- Please [click here](#) to subscribe to the NCAA Eligibility Center Newsletter.

# HIGH SCHOOL PORTAL

## For Primary and Secondary Contacts



## ACCOUNT ACCESS FOR NEW CONTACTS

- » If the current primary and secondary contacts are no longer employed at your school, complete the [High School Contact Change Form](#).
- **Note:** Your school's primary and secondary contacts should have access to curriculum and student records and have the bandwidth to have ongoing engagement with the Eligibility Center.
- » In the [High School Portal](#), you can manage your school's core-course list, submit fee waivers, review open tasks and view student reports.



## TASKS

- » In the [Tasks tab](#), you can:
  - Review any open/completed task that has been assigned to your account.
  - **Note:** You'll receive task emails, but it's important to review your task list often. Outstanding tasks could delay your student's certification or prevent them from meeting initial-eligibility requirements.
- » To learn how to manage your school's tasks, [view this tutorial](#).




# STUDENT REPORTS

- » In the [Search Student Details tab](#), you can:
  - View all registered college-bound students-athletes that have indicated attendance at your school.
  - Upload transcripts for current and former students.
    - > To learn how to upload transcripts, [view this tutorial](#).
    - > **Note:** Uploaded transcripts are received in your student's account within 30 minutes.
- » In the [Fee Waiver Report tab](#), you can:
  - Review previously [submitted fee waivers](#).



ELIGIBILITY CENTER

A large, stylized NCAA logo is centered on a blue basketball court floor. The logo is white with a blue outline. The court floor is dark blue with white lines. The entire scene is surrounded by a shower of colorful confetti in shades of blue, orange, and yellow. In the bottom right corner, there is a decorative graphic of white lines forming a zigzag pattern.

**NCAA**

**RESOURCES**



ELIGIBILITY CENTER

## RESOURCES



**Subscribe to the  
High School Newsletter**

- » [Guide for High School Counselors.](#)
- » [Guide for the College-Bound Student-Athlete.](#)
- » [Initial-Eligibility Flyer.](#)
- » Visit the [High School Portal.](#)
  - [High School Portal Quick Start Guide.](#)



[@ncaaec](#)



[@playcollegesports](#)



[@ncaaec](#)



[@ncaaec](#)



ELIGIBILITY CENTER

# QUESTIONS?



**Take a Short Survey  
on How We Did Today**





ELIGIBILITY CENTER

# UPCOMING FREE WEBINAR

## For Your Students and Their Families



**Share This Message**



ELIGIBILITY CENTER

# SOCIAL MEDIA

Follow the NCAA Eligibility Center



**Twitter**  
[@ncaaec](https://twitter.com/ncaaec)



**Instagram**  
[@playcollegesports](https://www.instagram.com/playcollegesports)



**Facebook**  
[@ncaaec](https://www.facebook.com/ncaaec)



**YouTube**  
[@ncaaec](https://www.youtube.com/ncaaec)



ELIGIBILITY CENTER

# THANK YOU FOR JOINING!

## Contact the Eligibility Center



Connect with the  
Eligibility Center

- » High school support line.
  - 877-622-2321.
    - > Monday-Friday.
    - > 8:30 a.m. to 5:30 p.m. Eastern time.
- » College-bound student-athlete support line.
  - 877-262-1492.
    - > Monday-Friday.
    - > 9 a.m. to 5 p.m. Eastern time.



[@ncaaec](https://twitter.com/ncaaec)



[@playcollegesports](https://www.instagram.com/playcollegesports)



[@ncaaec](https://www.facebook.com/ncaaec)



[@ncaaec](https://www.youtube.com/ncaaec)